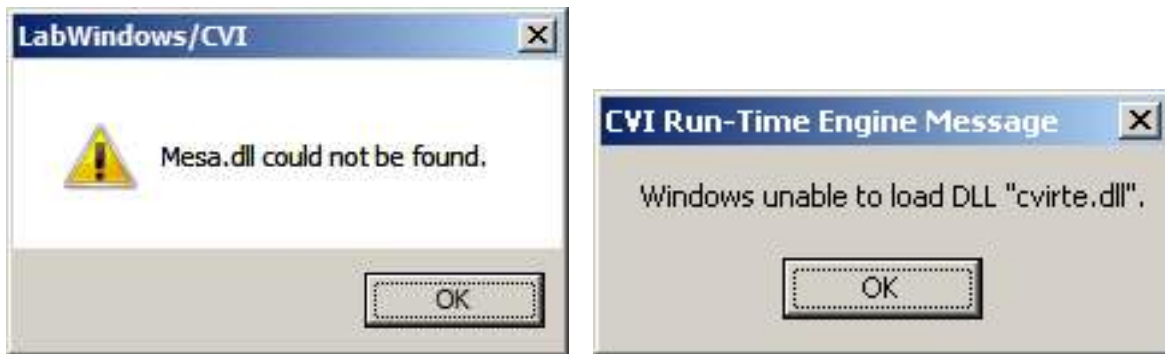


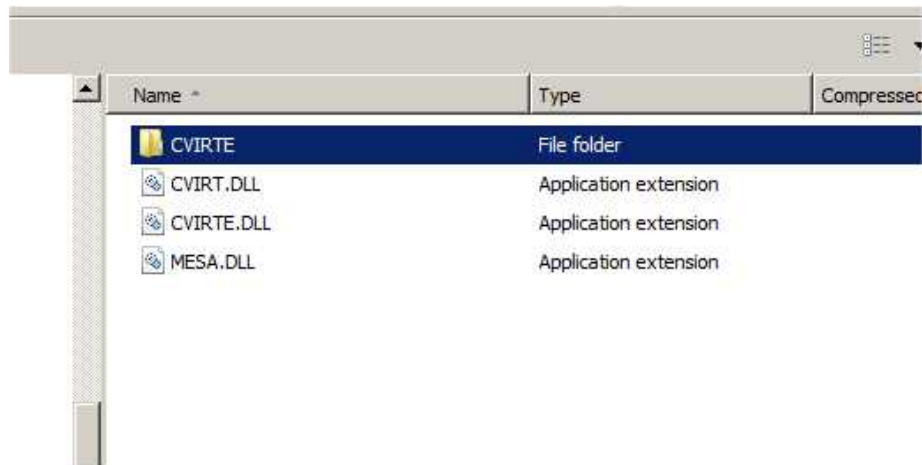
Sharp Shape Missing MESA.DLL or CVIRTE DLL Solutions

Copyright ©, All rights reserved, August 8, 2014

MESA.DLL and CVIRTE DLL files are required in the Sharp Shape scan programs. After installing the scan program, some computers do require these files explicitly, but some do not. Error messages may show up as shown below.



To solve the problem, click the “missing CVIRTE DLL or MESA DLL files” link and download the ZIP file named CVIRTE.ZIP. Unzip it to a folder and you will get some files and folders as shown below. Copy all the files and all the subfolders to ‘the working folder’. Keep the same file structure. If it is for the foot scanner, ‘the working folder’ is C:\ScanFeet. . If it is for the cast scanner, ‘the working folder’ is C:\ScanCast. If it is for AOMS, it is C:\AOMS.



If you have any questions, please contact us at sharpshape@comcast.net. -- End of File --