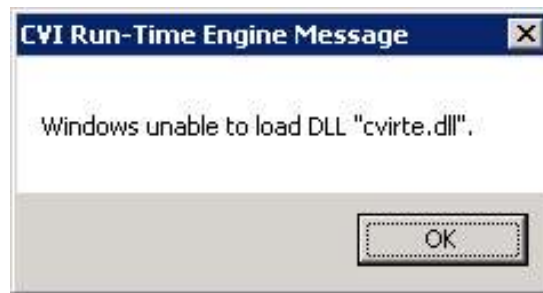


CVIRTE DLL Files not Found in Sharp Shape Scan Program

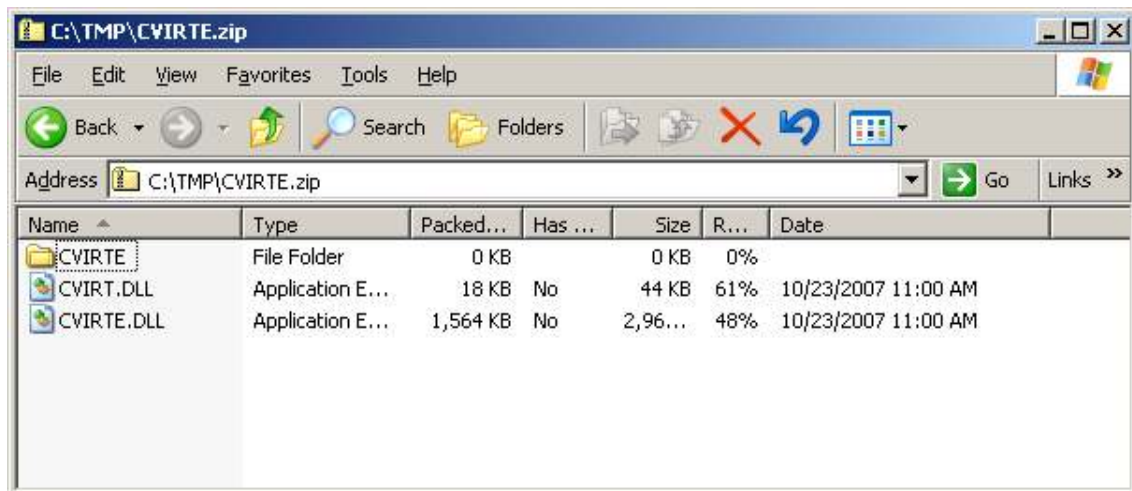
Copyright©, Sharp Shape, All rights reserved. November 2013

Some runtime engine files (DLL files) are needed to run the Sharp Shape scan programs. Usually, these files are installed to the computer during the setup process. However, if the computer security settings do not allow these files to be copied to the Windows folder, the user may experience a problem and get an error message like the following:

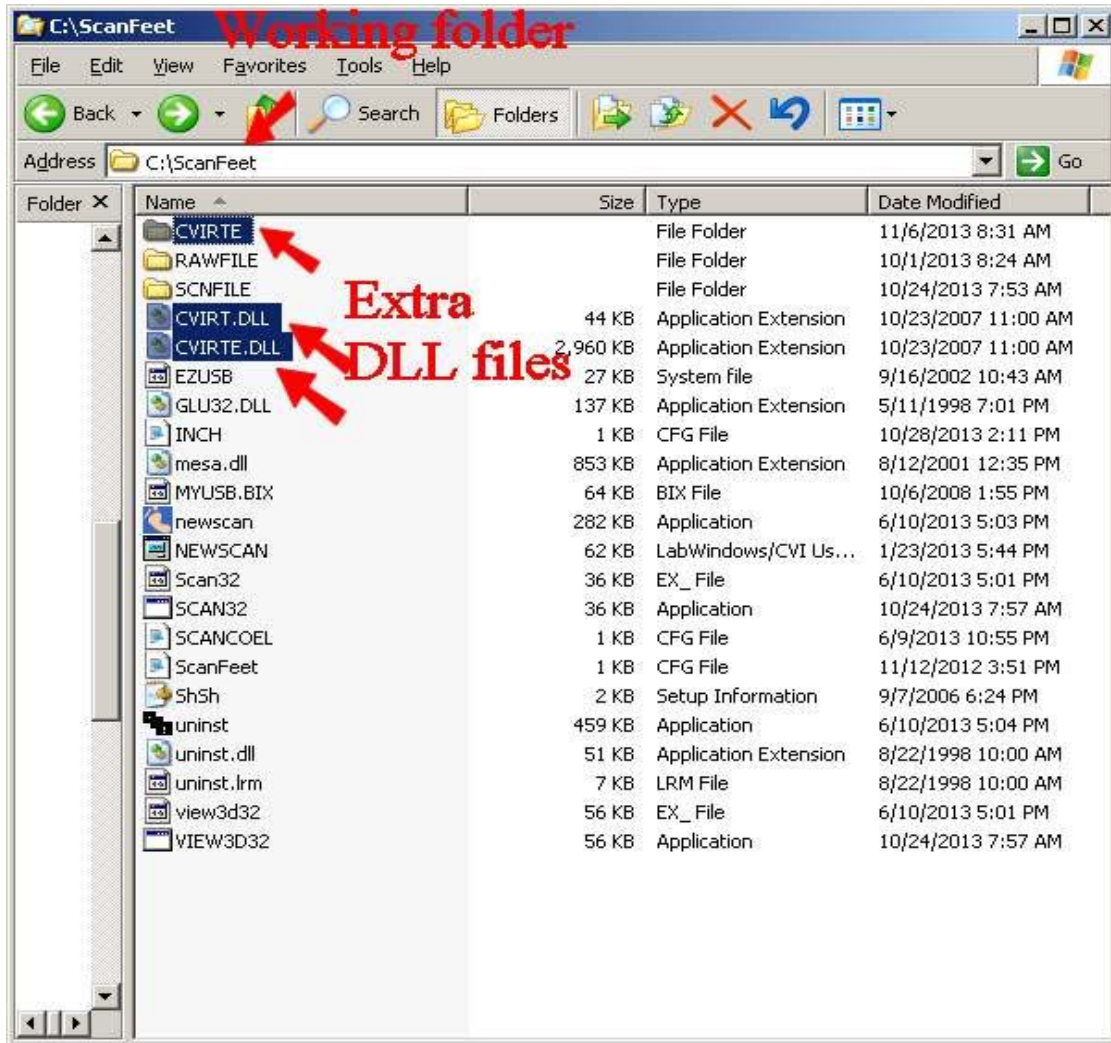


Also, our programs are meant to be installed into the local C-drive. If the programs are installed in a network drive, such as Z-drive, we are not sure whether that is a problem or not.

To solve the problem, we provide CVIRTE.ZIP file, which contain the DLL files that are needed for the scan program. The contents of the ZIP file are shown below:



Instead of installing these files into the Windows folder, copy these files to the scan program working folder. In the following case, the scan program files are installed in C:\ScanFeet folder. Depending on your case, you need to copy these DLL files into your working folder. The file structure is shown below:



In order for the program to function properly, the DLL files must be installed as pointed as the above. The two DLL files and the sub-folder must be in the order of the above. These DLL files and the scan program files must co-exist in the same folder as shown in the above.

If you have any questions or comments, please write to us at sharpshape@comcast.net. -- End of File --